

● IGC – J Series Planetary Gearbox by Axial Rotating

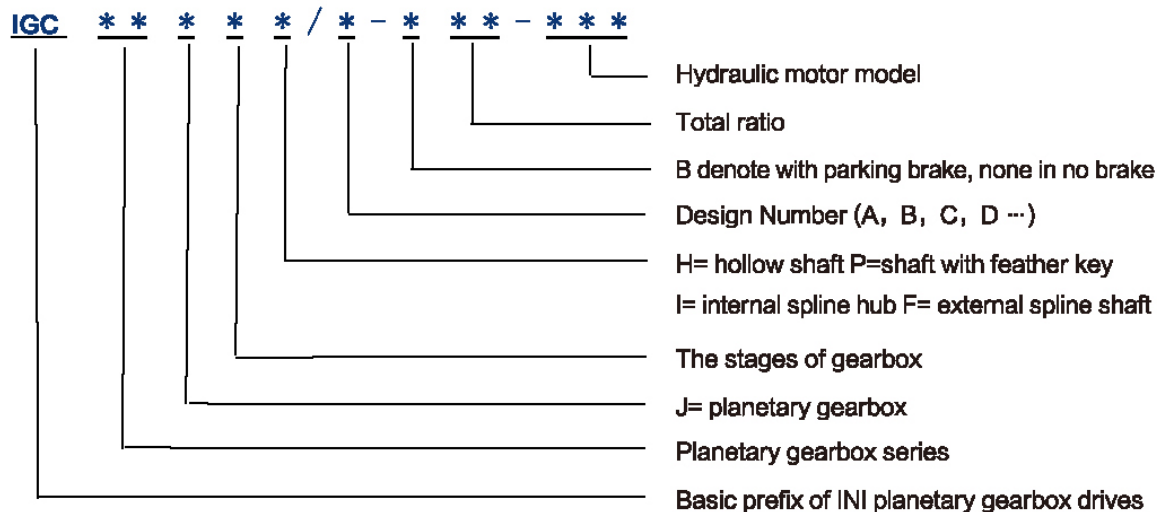
1. Brief Introduction

The IGC–J Series Planetary Gearbox by Axial Rotating are ideal transmission components that have proved successful in a wide range of operating conditions. Based on long years of experience and wide spectrum of products and applications, we know exactly what industrial requirement planetary gearboxes must meet. The series have many specific advantages: compact design, good reliability, long service life, and high mechanical efficiency. Combined with various hydraulic motor or electrical motor, the series can be used in all applications where high torques are required at low speed rates as mechanical torque increasing elements. The quality management systems of company conform to ISO9001:2000 and guarantor of a consistently high quality level. The team of R&D, design and sales engineers makes sure that the clients' wishes and concepts are quickly translated into technically and economically viable solutions.

The series described in this catalog are constantly reviewed standard type. Other design variants with different ratio, dimensions and power characteristics are available if so requested for specific applications.

The series have been widely applied in double roll squeezer, rubbish shredder, bucket wheel machine, belt conveyor, or wheel and crawler for providing high torques. They also have used in metallurgy, steel, sugar, recycling and environment equipment. So the series not only widely have been used by domestic important customer in relative field, but also have been exported to Southeast Asia, Middle East, India, Netherlands, Australia and Russia and so on.

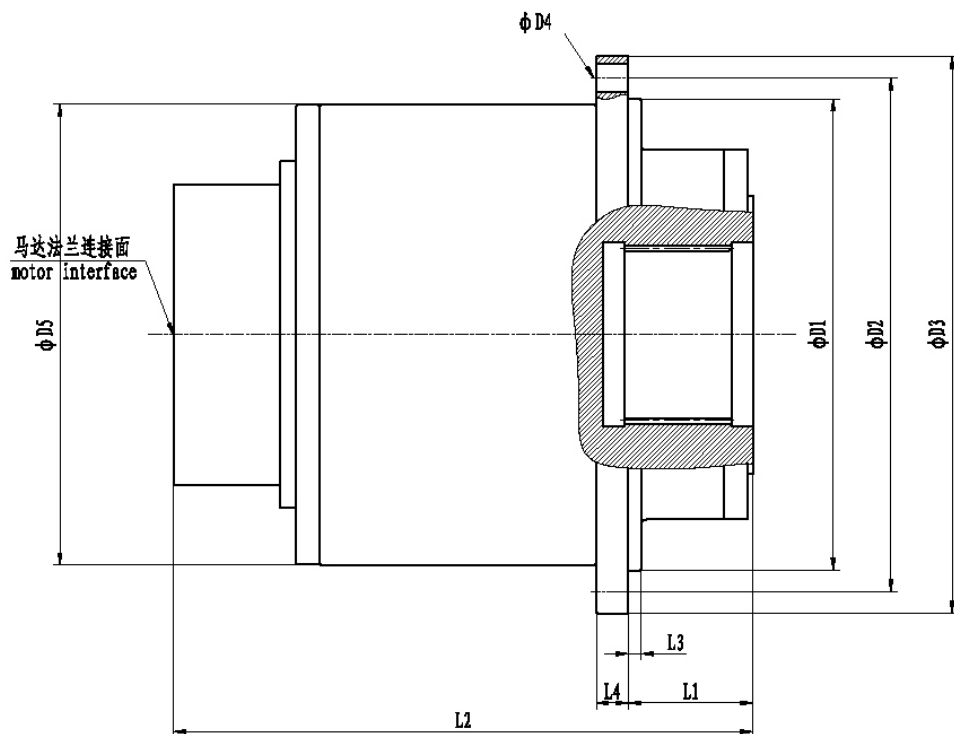
2. Model Options



3. Options Example

IGC80J3–B100–A2FE107/6.1WVAL10 represents that the series planetary gearbox is 80 with maximum output torque of 67kNm, design number B, three stages with a total ratio of 100 and a multi-disc parking brake, and could be fitted with axial piston hydraulic motor of A2FE107/6.1WVAL10.

● IGC-J



系列代号 Serial code	最大输出扭矩 Output Torque T maxNm	传动比 Ratio i	液压马达 Hydraulic Motor				D1	D2	D3	D4	D5	L1	L2	L3	L4
IGC60J3	42500	87.5 · 95.8 · 106.5 · 120.8 · 140.9 · 170.9	A2FB80 A2FB90 A2FB107 A2FB125	A2FM80 A2FM90 A2FM107 A2FM125	INM1 INM2 INM3	HMB010 HMB030 HMB045	380b8	410	440	20xφ22	370	84	419	30	30
IGC80J3	67000	77.7 · 100 · 111.9 · 127.9 · 150.9 · 186.4	A2FB107 A2FB125 A2FE160 A2FE180	A2FM90 A2FM107 A2FM125 A2FM160	INM2 INM3 INM4	HMB030 HMB045 HMB060	440b8	480	520	20xφ26	430	116	541	12	30
IGC110J3	100000	96.8 · 115.8 · 129.6 · 148.2 · 174.9	A2FB107 A2FB125 A2FE160 A2FE180	A2FM80 A2FM107 A2FM125 A2FM160	INM3 INM4 INM5	HMB060 HMB080 HMB100 HMB125	470b8	500	540	36xφ20	460	101	553	15	30
IGC160J3	140000	89 · 94.6 · 101.3 · 109.2 · 119.1 · 131.5 · 162.8	A2FE160 A2FE180 A4FM250 A4FM500	A2FM200 A2FM250 A2FM355 A2FM500	INM4 INM5 INM6	HMB100 HMB125 HMB150 HMB200	545b9	600	650	30xφ26	535	138	584	15	30
IGC220J3	200000	89.3 · 96.5 · 105.4 · 116.5 · 121.8 · 146.4 · 189.9	A2FE160 A2FE180 A4FM250 A4FM500	A2FM200 A2FM250 A2FM355 A2FM500	INM5 INM6 INM7	HMB125 HMB150 HMB200 HMB270	610b9	680	735	24xφ33	610	85	587	23	45
IGC350J4	410000	645.45	A2FE160 A2FE180 A4FM250 A4FM500	A2FM200 A2FM250 A2FM355 A2FM500	A6VM160 A6VM200 A6VM250 A6VM355	810b8	850	900	36xφ33	798	463.5	1013.5	45	50	